



## UPT Tuck Tab AAD Pocket Tongue Hinge Hand Tacking Instructions



**Warning:** These instructions require minor alternations to the reserve tray and caution should be used when modifying this equipment.

This work should be completed by the manufacturer, a certified FAA Master rigger or equivalent.

Prior to executing this modification to the AAD pouch it is necessary to remove both the main and reserve canopies from the container as well as the AAD

### ENGINEERING DEPARTMENT

1645 LEXINGTON AVENUE ♦ DELAND FL 32724-2106 ♦ TELEPHONE +1 386 736 7589 ♦ FAX +1 386 734 7537

UPT@UPTVECTOR.COM ♦ WWW.UPTVECTOR.COM

INSTRUCT.Tuck Tab AAD Pocket Hand Tack Instructions REV 1.docx

**TOOLS REQUIRED:**

Large Needle

Super Tack Cord (*Note: Tack has been colorized for clarity*)

Snips

Needle nose pliers (optional)

**SECTION I – Hand Tacking AAD Tuck Tab to Reserve Container**

Insert tuck tab into elastic pouch so the **parapack hinge** lays flat. The edge of the stiffener in the tab will overhang roughly 3/8<sup>th</sup>".



Mark at the fold in the hinge point at top and bottom of tab.

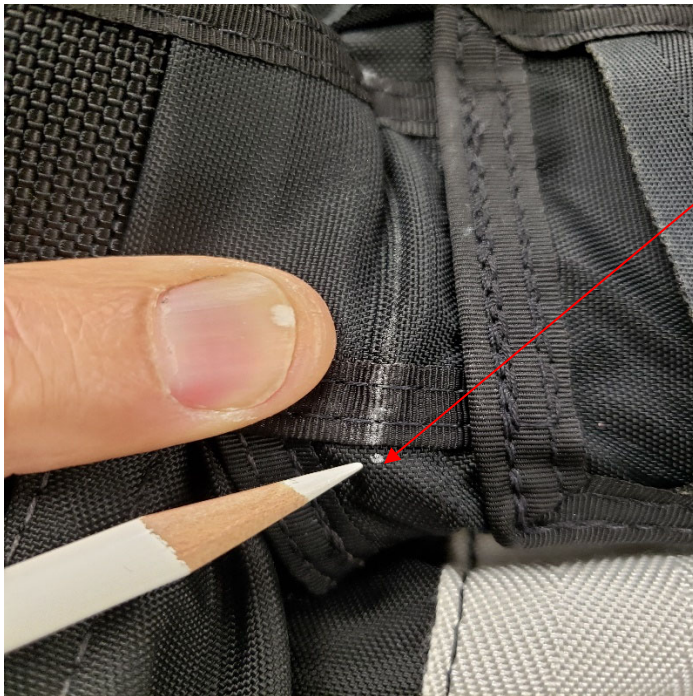


Draw a reference line between the two marks made at the hinge point.



Make a reference mark on the reserve container just above the reference line drawn on the tuck tab.



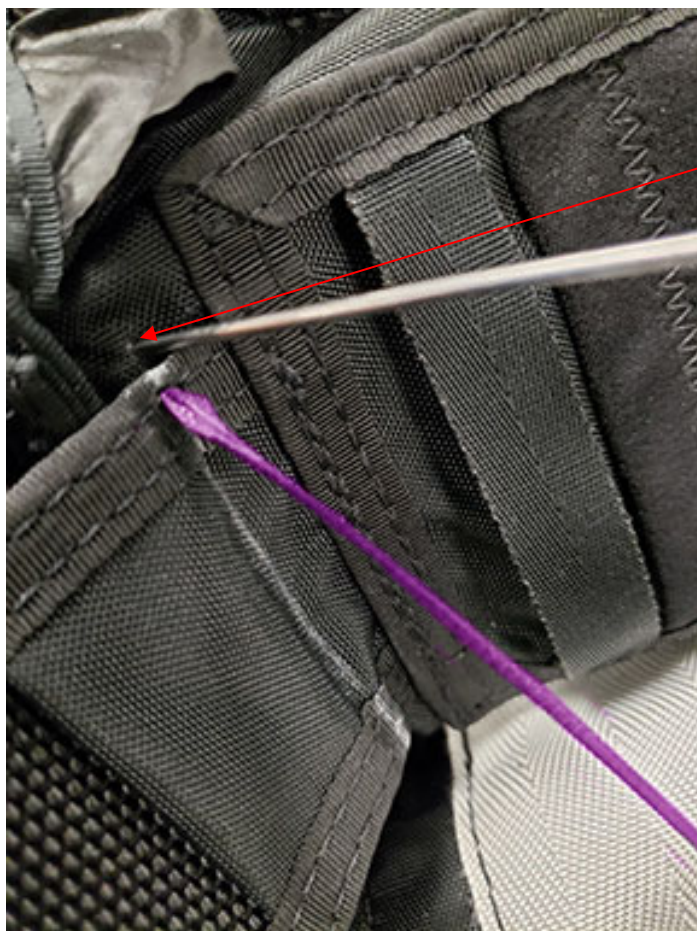


Make another mark on the reserve container just below the reference line drawn on the tuck tab.

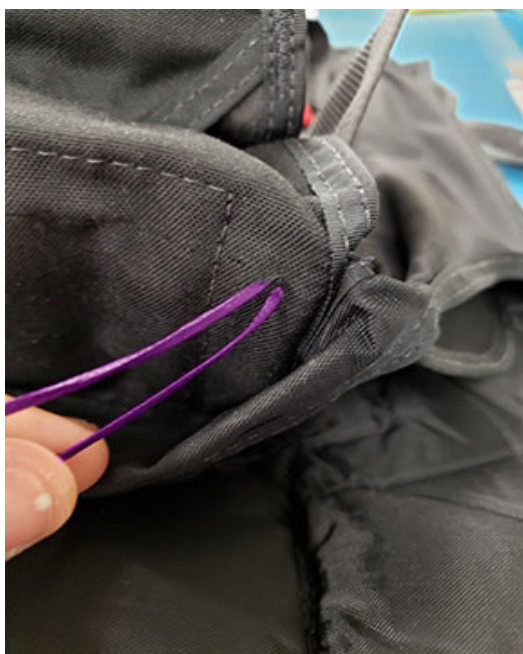


Cut two 2-foot lengths of Super Tack, then fold in half. Thread through needle eye, then insert needle at the hinge point as shown.

Pass the needle through AAD pouch hinge and through the reserve container. Once needle and super tack are all the way through leave enough supertack on the backside to tie off later.  
\* do not pass needle through reserve containers' wrap around corner, as this corner will overlay and cover the knots.



Re-thread the needle with the other end of the supertack and pass through the reserve container just above the hinge.



Pull both lengths of super tack tight from the back securing the hinge to the reserve container.





Tie a surgeon's knot, seating the knot firmly to the reserve tray.



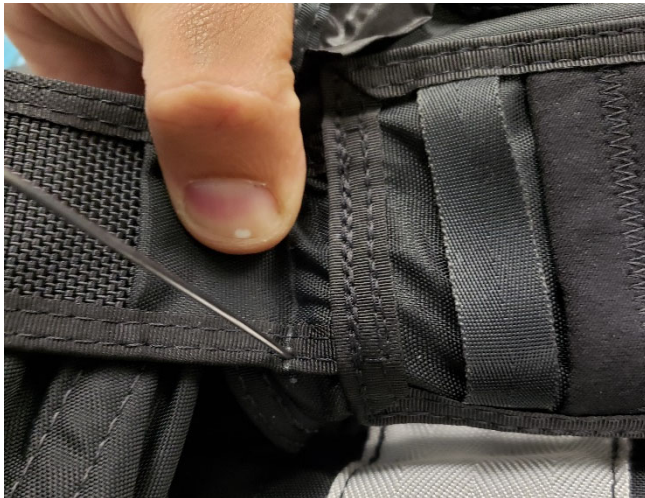
Detail of surgeon's knot.



Finish with an overhand knot, making sure to seat fully against the surgeon's knot.



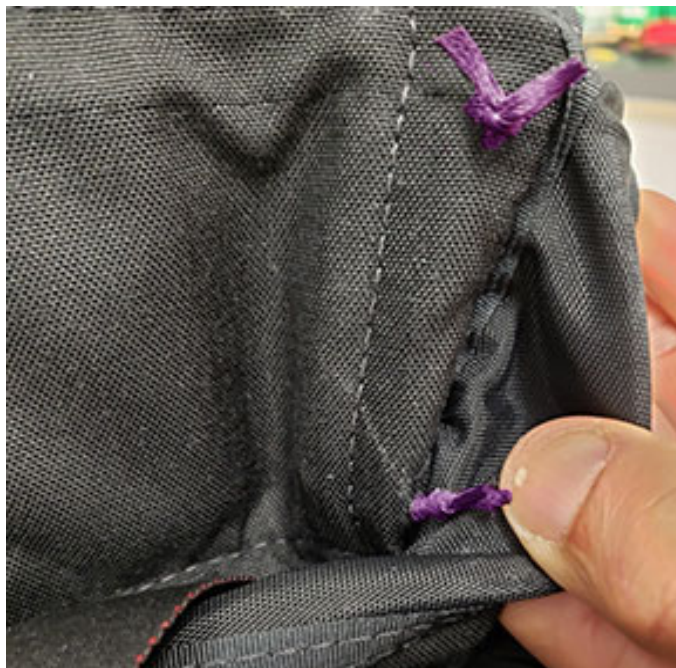
Trim super tack tails leaving ¼" of excess.



Following the same procedure to secure the bottom of the AAD tongue hinge.



When tacking lowering hinge take extra care when passing the needle through the reserve tray as not to go through the wrap around corner on the backside.

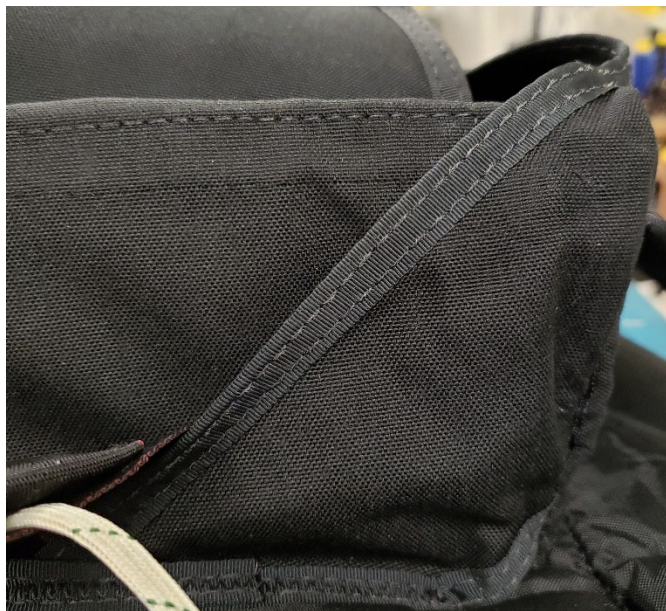


Finish securing lower hinge by using the same surgeons knot and over hand stop knot.



\*Detail of finished hand tacking from the inside, the hinge should lay flush and tight against the reserve tray.





*Detail of completed hand tacking with the reserve tray wrap around corner concealing the hand tacking.*