



Main Loop Anchor Retrofit Instructions

Overview

Installation procedure for main loop anchor attachment. This procedure allows for field replacement of the main loop anchor by a properly rated rigger.

Personnel

FAA Certified Master Rigger or Foreign Equivalent

Machines/Tools required

Marking Pencil

Seam Ripper

Snips

Metal Ruler

304 zig zag machine - medium duty (E Thread)

301 straight stitch machine – Heavy Duty (FF thread)

Main Loop Anchor-Bottom Through Loop Attachment-Retrofit P/N 002-007-016

Notes: Alternate colors used for demonstration purposes only.

Procedure



Image 1

1. Prepare anchor by marking and cutting the binding tape 1" to either side of the Type XII tape.
(Image 1)

ENGINEERING DEPARTMENT

1645 LEXINGTON AVENUE ♦ DELAND FL 32724-2106 ♦ TELEPHONE +1 386 736 7589 ♦ FAX +1 386 734 7537

UPT@UPTVECTOR.COM ♦ WWW.UPTVECTOR.COM

Main Loop Anchor Retrofit Instructions



Image 2

Step 2. Hot knife at 1" mark. Fold binding tape tail in half and hot glue. (Image 2)



Image 3

Step 3. Open the first stitch line on the reserve tray corners. *This step may not be necessary for larger containers. (Image 3 and 4)



Image 4



Image 5

Step 4. Mark the reserve tray at top of the original loop anchor to ensure that the replacement is placed in the same spot as the original. (Image 5)

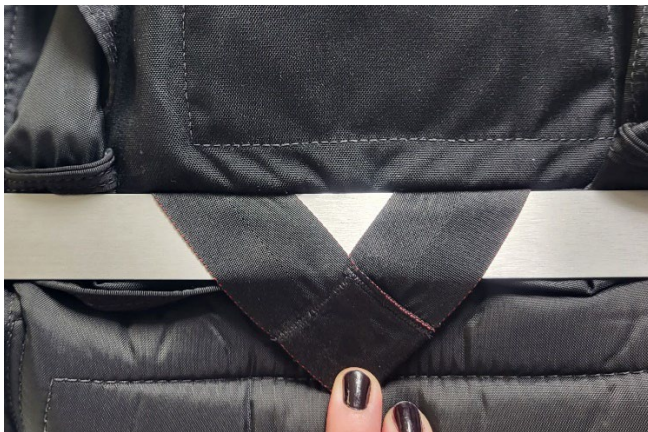


Image 6

Step 5. Remove the original anchor with a hot knife, as close to the bottom of the anchor as possible. Use a metal ruler or similar device to protect the reserve tray and flaps from damage. (Image 6)

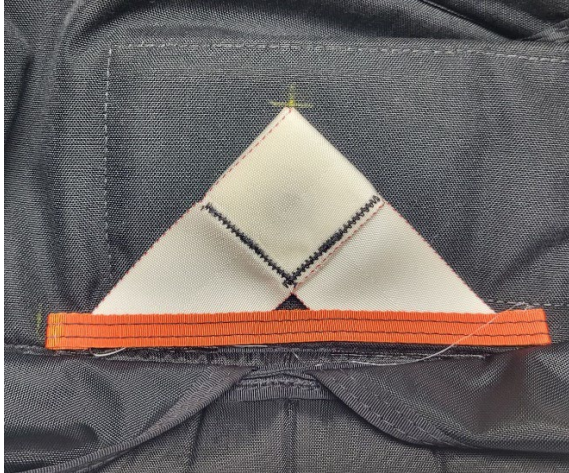


Image 7

Step 6. Align the mark on the container with the point of the replacement anchor. Outline where the binding tape is to be placed (under AAD pouch) to verify positioning. (Image 7 & 8)



Image 8



Image 9

Step 7. Align the anchor on the reserve tray and attach under the AAD pouch with a double row of zig zag along the binding tape, E thread. (Image 9)



Image 10

Step 8. Verify placement of new anchor with mark on reserve tray and confirm that the stitching on the inside of the reserve pack tray is between the AAD pouch and the bottom of the reserve pack tray. (Image 10 & 11)



Image 11

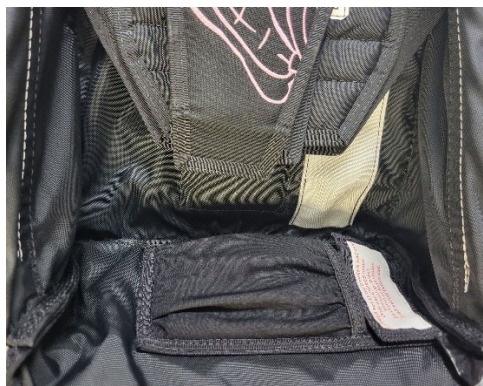


Image 12

Step 10. Sew the reserve tray corners closed on the edge stitch line of the binding tape, using FF thread, locking off both ends. *This step may not be necessary for larger containers. (Image 12)