



Mutant Container Line Buffer Installation

Overview

Field installation instructions for main line buffer (Taco) into Mutant Container.

Personnel

Master Rigger or Foreign Equivalent

Machines/Tools Required

2 Line Buffers (P/N 045 019 001)

301 stitch sewing machine- E thread, or FF Thread

Snips

Marking Pencil

Ruler

Hot Knife

Procedure

Remove reserve canopy from container.

Note: You may need to open the main tray corners to ease installation.

Be vigilant in keeping reserve flaps and the harness clear from the stitch line.

ENGINEERING DEPARTMENT

1645 LEXINGTON AVENUE ♦ DELAND FL 32724-2106 ♦ TELEPHONE +1 386 736 7589 ♦ FAX +1 386 734 7537

UPT@UPTVECTOR.COM ♦ WWW.UPTVECTOR.COM

UPT INSTRUCT TEMPLATE-MUTANT LINE BUFFER INSTALLATION



Image 1

Step 1. Identify the right and left buffer flaps. The excess tape runoff is on the top of the flap. The buffer flap will be oriented the same as the inner riser covers. (Image 1)



Image 2

Step 2. Mark $\frac{3}{4}$ " above top edge of buffer. Hot knife off excess. (Image 2)



Image 3

Step 3. Fold tail in half toward the Cordura side of the flap and baste. (Image 3)

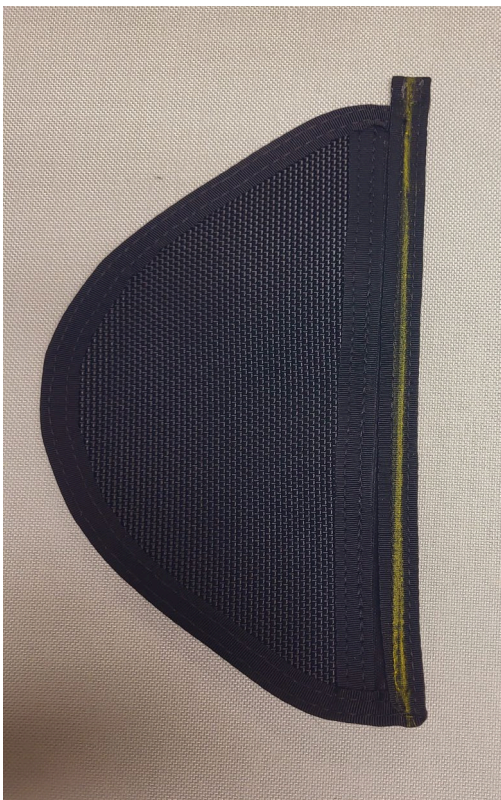


Image 4

Step 4. Mark midline on the ballistic side of the buffer flap binding tape, between the double row of stitching. (Image 4)



Image 5

Step 5. Identify the stitch line running inside the container from the outer riser cover to the bottom corner of the main pack tray. (Image 5)



Image 6

Step 6. Locate stabilizer stitch line. The bottom edge of the buffer will sit 1/8" above the top edge of the stabilizer stitch pattern. (Image 6)



Image 7

Note: To confirm the correct buffer is used on each side, ballistic material should be visible on both Inner Riser Cover and Buffer when the flaps are open. (Image 7)



Image 8

Step 9. Align Midline marking and container stitch line. Place the buffer so the bottom edge sits 1/8" above stabilizer stitch line. Sew one pass of FF Thread, OR two passes of E Thread, locking off both ends. Repeat on opposite side. (Image 8)

Step 10. Confirm that stitch line is on back pad binding tape only. Stitch line should not step off onto side flap.

Step 11. Close main tray corners if needed.



Image 9

Buffer installation completed.
(Image 9 and 10)

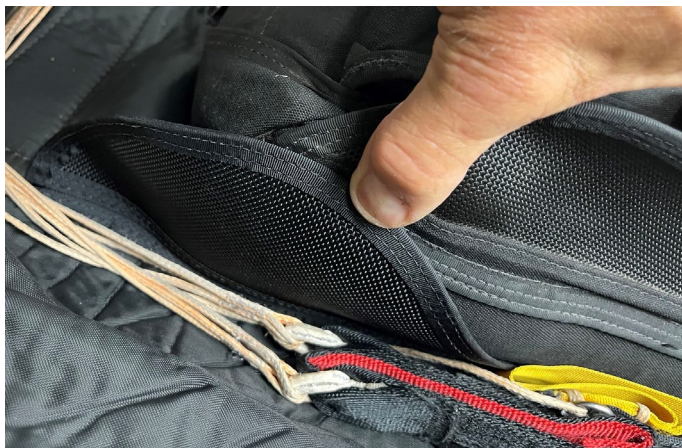


Image 10